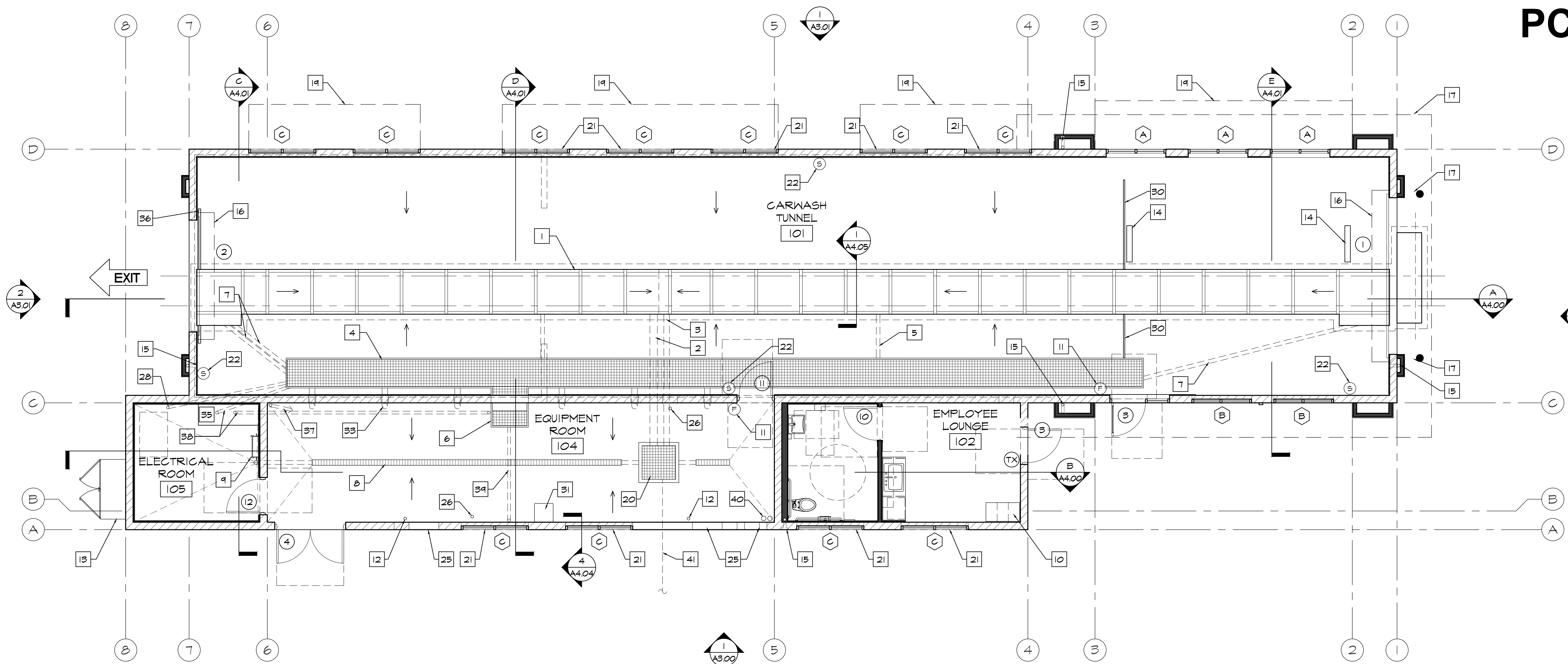


PC EXHIBIT C



1 FLOOR PLAN
SCALE: 3/16" = 1'-0"

SYMBOL LEGEND

- (+) DOOR TAG - SEE DOOR SCHEDULE ON A5.00
- (X) WINDOW TAG - SEE WINDOW SCHEDULE ON A5.02 (TYP) WINDOWS WITHIN 24" OF A DOOR SHALL BE TEMPERED BY CODE. CONTRACTOR TO VERIFY IF OWNER WANTS ALL TEMPERED GLASS
- (TX) TACTILE EXIT SIGN PER CBC. SEE DETAIL 12/A0.03 (TYP. 3 PLACES)

ADA SIGN NOTES

PROVIDE INTERNATIONAL SYMBOL OF ACCESSIBILITY SIGNAGE AT DOORS #3, #5, AND #6.
PROVIDE TACTILE EXIT SIGNAGE AT EACH EXIT PER DETAIL 12/A0.03, AT DOORS #3, #5 AND #6.

FIRE NOTES

1. PROVIDE SIGNS ABOVE ALL EXIT DOORS READING: "THIS DOOR TO REMAIN UNLOCKED WHEN THIS SPACE IS OCCUPIED" CBC.
2. PROVIDE MEANS OF EGRESS ILLUMINATION PER CBC SECTION 100B.
3. ALL PORTIONS OF THE BUILDING SHALL BE WITHIN 75 FEET OF A FIRE EXTINGUISHER. THE MINIMUM SIZE OF THE FIRE EXTINGUISHER SHALL BE 2-A-10-BC. COORDINATE LOCATION WITH LOCAL FIRE DEPARTMENT.
4. INTERIOR WALL AND CEILING FINISHES SHALL COMPLY WITH CBC CHAPTER 8.
5. PROVIDE A SIGN STATING "MAXIMUM OCCUPANT LOAD" - CBC SECTION 1004.3. COORDINATE WORDING AND SIGN LOCATION WITH LOCAL FIRE DEPARTMENT.

GENERAL NOTES

1. DO NOT SCALE DRAWINGS
2. SEE DRAWING A2.01 FOR DIMENSIONS.
3. SEE DRAWING A2.01 FOR WALL TYPES
4. SEE DRAWING A2.02 FOR FINISH FLOOR ELEVATIONS
5. SEE SITE PLAN FOR ACCESSIBLE PATH OF TRAVEL
6. EXIT DOORS SHALL BE OPERABLE FROM THE INSIDE WITHOUT THE USE OF A KEY OR ANY SPECIAL KNOWLEDGE.
7. GC TO COORDINATE ALL REQUIRED BLOCKING FOR WALL HUNG EQUIPMENT, SHELVES, LIGHTING, ETC. FOR PROPER INSTALLATION HEIGHTS.
8. TACTILE EXIT SIGNS SHALL BE REQUIRED AT THE FOLLOWING LOCATIONS:
 - A. WHEREVER BASIC CBC PROVISIONS REQUIRE EXIT SIGNS FROM A ROOM OR AREA TO A CORRIDOR OR HALLWAY. THE TACTILE EXIT SIGN SHALL HAVE THE WORDS, "EXIT ROUTE."
 - B. EACH GRADE-LEVEL EXIT DOOR. THE TACTILE EXIT SIGN SHALL HAVE THE WORD, "EXIT."

KEYNOTES

- 1 CONVEYOR TRENCH. SLOPE AT 1/4" PER FOOT TO DRAIN.
- 2 8" CONVEYOR TRENCH DRAIN PIPE. SEE PLUMBING DRAWINGS.
- 3 6" CONVEYOR TRENCH OVERFLOW. SEE PLUMBING DRAWINGS.
- 4 UTILITY TRENCH. SLOPE BOTTOM TO DRAIN.
- 5 4" FLOOR DRAIN FROM UTILITY TRENCH TO THE CONVEYOR TRENCH (TYPICAL 2 PLACES). SEE PLUMBING DRAWINGS
- 6 3'-4" WIDE X 2'-2" DEEP OPEN FOR ACCESS TO UTILITY TRENCH. CONTRACTOR TO PROVIDE COVER - MATCH UTILITY TRENCH
- 7 4" PIPE CHASE FROM UTILITY TRENCH TO CONVEYOR TRENCH. (TYPICAL 6 PLACES)
- 8 TRENCH DRAIN. PROVIDE 2 AT THE EXIT - EXTEND PAST WALL 1'-0" BEYOND OPENING. SEE PLUMBING DRAWINGS.
- 9 ROOF ACCESS LADDER.
- 10 EMPLOYEE LOCKERS. (TOTAL OF 3 - 1 ADA ACCESSIBLE) SEE DETAIL 4/A6.02 - CONTRACTOR SUPPLIED AND INSTALLED.
- 11 WALL MOUNTED ENCLOSED FIRE EXTINGUISHER. - 2A-10BC (TYPICAL 2 PLACES)
- 12 ROOF DRAIN LEADER (TYPICAL 3 PLACES). SEE PLUMBING PLANS
- 13 ELECTRICAL SERVICE SWITCHGEAR. SEE ELECTRICAL DRAWINGS
- 14 CUT RECESS IN SLAB FOR TIRE SENSOR SWITCH. (TYPICAL 2 PLACES) GO TO CONFIRM LOCATION
- 15 HOSE BIB IN RECESS BOX. PROVIDE WITH LOCKABLE DOOR AT EXTERIOR LOCATIONS. SEE PLUMBING DRAWINGS (TYPICAL 4 PLACES)
- 16 COILING ROLL-UP DOOR. (TYPICAL 2 PLACES)
- 17 4" CONCRETE FILLED PIPE BOLLARD AT ENTRANCE. (TYPICAL 2 PLACES)
- 18 LINE OF ROOF ABOVE.
- 19 WALL MOUNTED CANOPY ABOVE. (TYPICAL 4 PLACES)
- 20 3'-0" X 3'-0" RECLAIM CLEAN-OUT - SEE STRUCTURAL DRAWINGS
- 21 FAUX WINDOW. SEE EXTERIOR ELEVATIONS
- 22 EMERGENCY STOP BUTTONS. LOCATE PER QUICK QUACK REPRESENTATIVE. (TYPICAL 4 PLACES) SEE DRAWING A7.00 FOR LOCATIONS.
- 23 WALL MOUNTED IT CABINET. SEE ELECTRICAL DRAWINGS
- 24 KNOX BOX - CONTRACTOR TO COORDINATE WITH LOCAL FIRE DEPARTMENT FOR TYPE, SIZE AND PREFERRED LOCATION

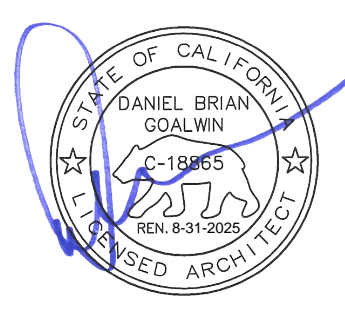
- 25 32" WIDE X 16" HIGH AIR VENT. SEE EXTERIOR ELEVATIONS (TYP. 3 PLACES).
- 26 4" DRAIN PIPE STUBBED UP 12" AFF. PAINT GREEN. SEE PLUMBING DRAWINGS (TYPICAL 2 PLACES).
- 27 CONTRACTOR FURNISHED AND INSTALLED 20" X 54" X 96" TALL STORAGE CABINET WITH ADJUSTABLE SHELVING AND WHITE MELAMINE FINISH ON THE INSIDE AND GRAY OUTSIDE. SEE DETAIL 6/A6.02.
- 28 3" CHASE (NEXT TO CONTROL PANEL TO UTILITY TRENCH).
- 29 LEVEL LANDINGS PER CBC 11B-404.2.4 AND TABLE 11B404.2.4.1 (TYP) - 24" MIN STRIKE EDGE CLEARANCE FOR THE EXTERIOR DOOR LANDING.
- 30 3/4" x 1 1/2" WIDE RECESS IN SLAB FOR DRAINAGE (TYPICAL 2 PLACES).
- 31 CONTRACTOR SUPPLIED AND INSTALLED EYE WASH STATION. SEE EQUIPMENT PLAN SHEET A7.00 AND PLUMBING DRAWINGS.
- 32 34" MAXIMUM A.F.F. COUNTER TOP. SEE DETAIL 1/A6.02.
- 33 6" SWEEPS FROM UTILITY TRENCH TO EQUIPMENT ROOM (TYPICAL 6 PLACES) VERIFY WITH OWNER FOR EXACT LOCATIONS).
- 34 CONTRACTOR FURNISHED AND INSTALLED 18" X 36" X 40" TALL POS CABINET SEE DETAIL 12/A6.02.
- 35 2'-0" X 5'-6" X 4" TALL CONCRETE "HOUSE CLEANING PAD" FOR MCC PANEL SEE STRUCTURAL DRAWINGS.
- 36 3/4" x 2 1/2" WIDE RECESS IN SLAB FOR DRAINAGE (TYPICAL 2 PLACES) EXTEND PAST EXIT OPENING 1'-0" MINIMUM.
- 37 1" PVC CHASE TO BUS JUICE CONTROL PANEL. SWEEPS ONLY. NO 90 DEGREES.
- 38 2 - 3" CHASE AT CENTER OF MCC PANEL "HOUSE KEEPING PAD". RUN ONE CHASE TO EQUIPMENT TRENCH AND ONE NEXT TO ACCESS OPENING.
- 39 3" CHASE FROM ACCESS OPENING TO FACE OF WALL.
- 40 NEED CHASES TO EACH VACUUM ENCLOSURE. LONG SWEEPS ONLY. GC TO INSTALL AND PULL 3/4" PEX LINE FROM EQUIPMENT ROOM TO ENCLOSURES WOUND UP TO 10' COIL ON EACH END. SCHEDULE 40 SWEEPS.
- 41 GC TO OBTAIN CUT SHEETS FROM TANK MANUFACTURER FOR INSTALLATION COORDINATION PRIOR TO TANK GRADING.

No. _____ Date _____ By _____ Ckd. _____ Appr. _____ Revision _____

Title:

FLOOR PLAN
QUICK QUACK CAR WASH NO. 26-651
300 NORTH SUNRISE AVE
ROSEVILLE, CALIFORNIA

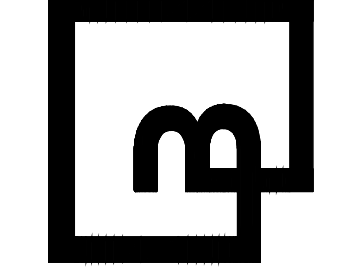
For:
QUICK QUACK CAR WASH
6020 WEST OAKS BLVD., SUIT 300
ROCKLIN, CA 95765



Scale:
Horizontal _____
As Noted _____
Vertical _____
N/A _____

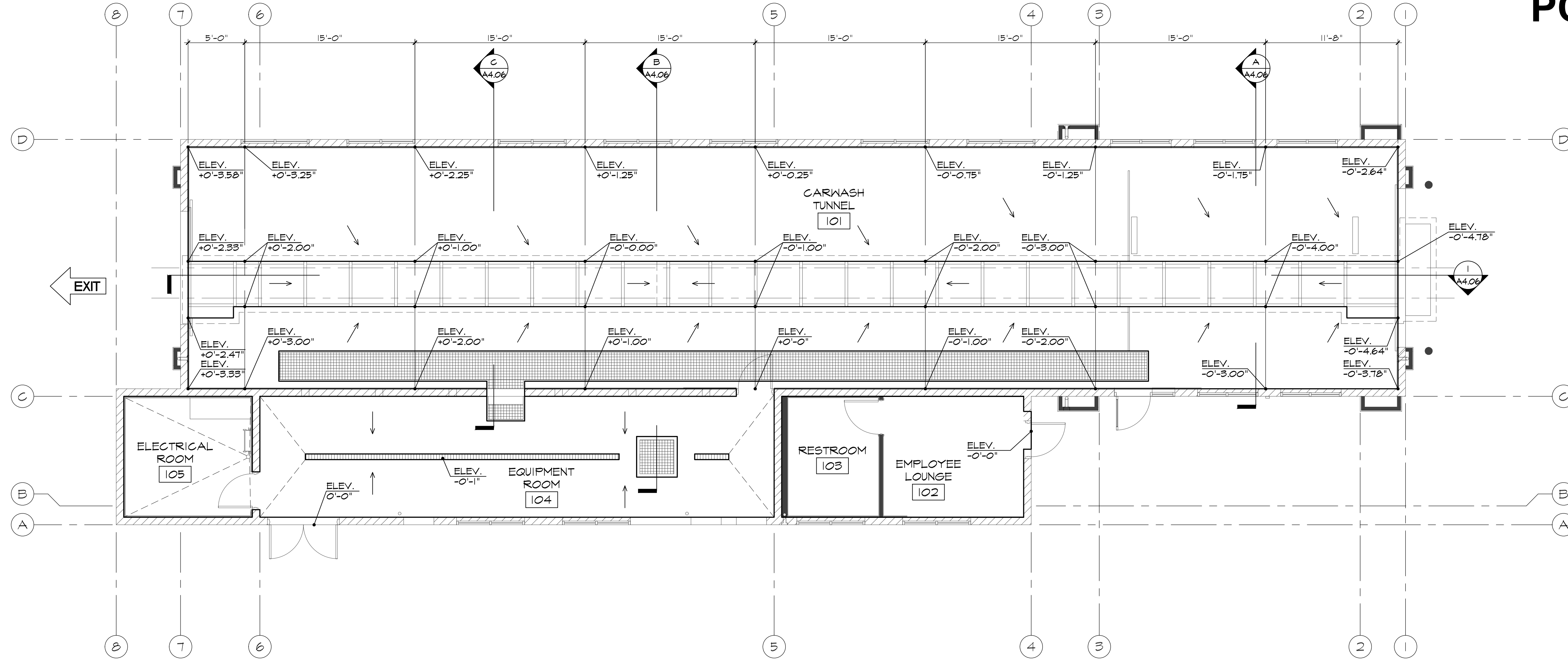
Designed: JLR
Drawn: JLR
Checked: JLR
Approved: KCH
Date: XX/XX/XX

Barghausen Consulting Engineers, Inc.
18215 72nd Avenue South
Kent, WA 98032
425.251.6222 barghausen.com



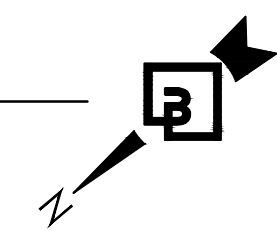
Job Number: **23359**
Sheet: **A2.00**

PC EXHIBIT C



EXIT

1 FINISH FLOOR PLAN ELEVATIONS
SCALE: 3/16" = 1'-0"



No. Date By Ckd. Appr. Revision

Title:

FINISH FLOOR PLAN ELEVATIONS
QUICK QUACK CAR WASH NO. 26-651
300 NORTH SUNRISE AVE
ROSEVILLE, CALIFORNIA

For:

QUICK QUACK CAR WASH
6020 WEST OAKS BLVD., SUIT 300
ROCKLIN, CA 95765

Scale:

Horizontal As Noted
Vertical N/A

Designed JLR

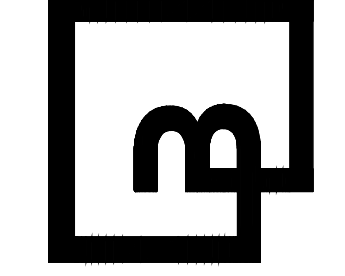
Drawn JLR

Checked JLR

Approved KCH

Date XX/XX/XX

Barghausen
Consulting Engineers, Inc.
18215 72nd Avenue South
Kent, WA 98032
425.251.6222 barghausen.com



Job Number
23359

Sheet
A2.02